

RESPIRATORY SYSTEM.

RESPIRATORY SYSTEM

CONDUCTION PART★

NASAL CAVITY_A

RESPIRATORY MUCOSA_{A¹}

PHARYNX_B

LARYNX_C

TRACHEA_D

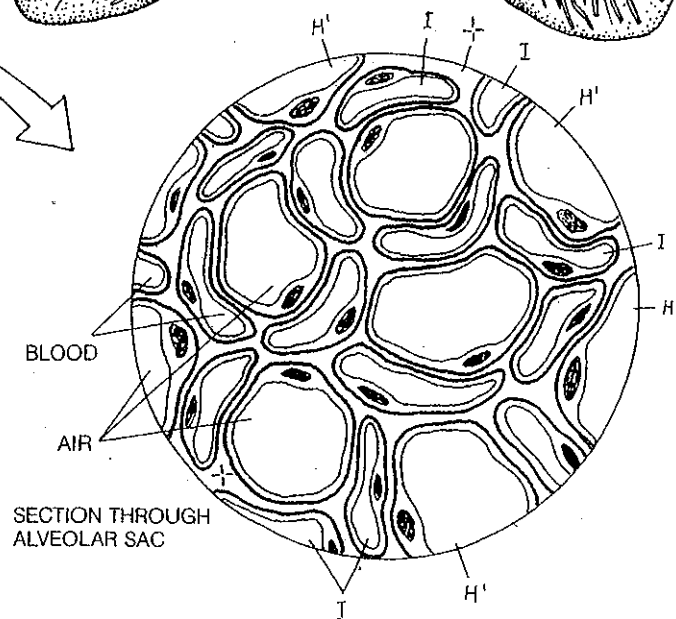
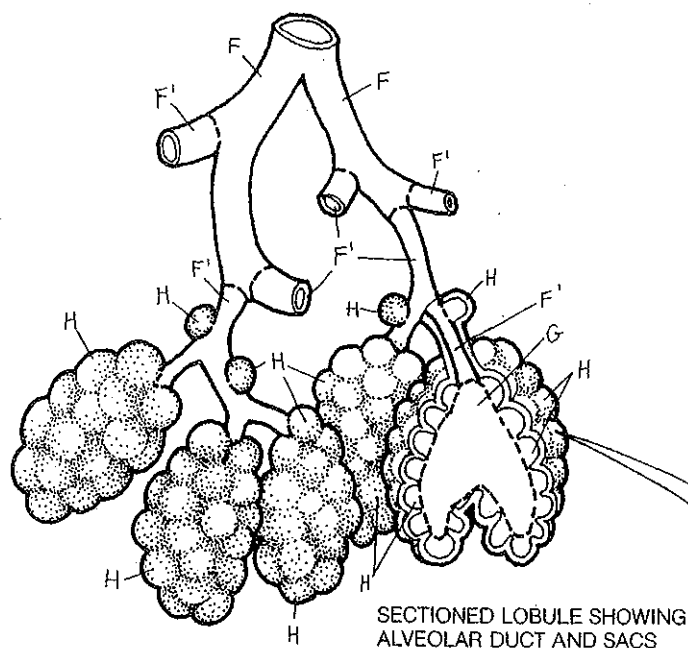
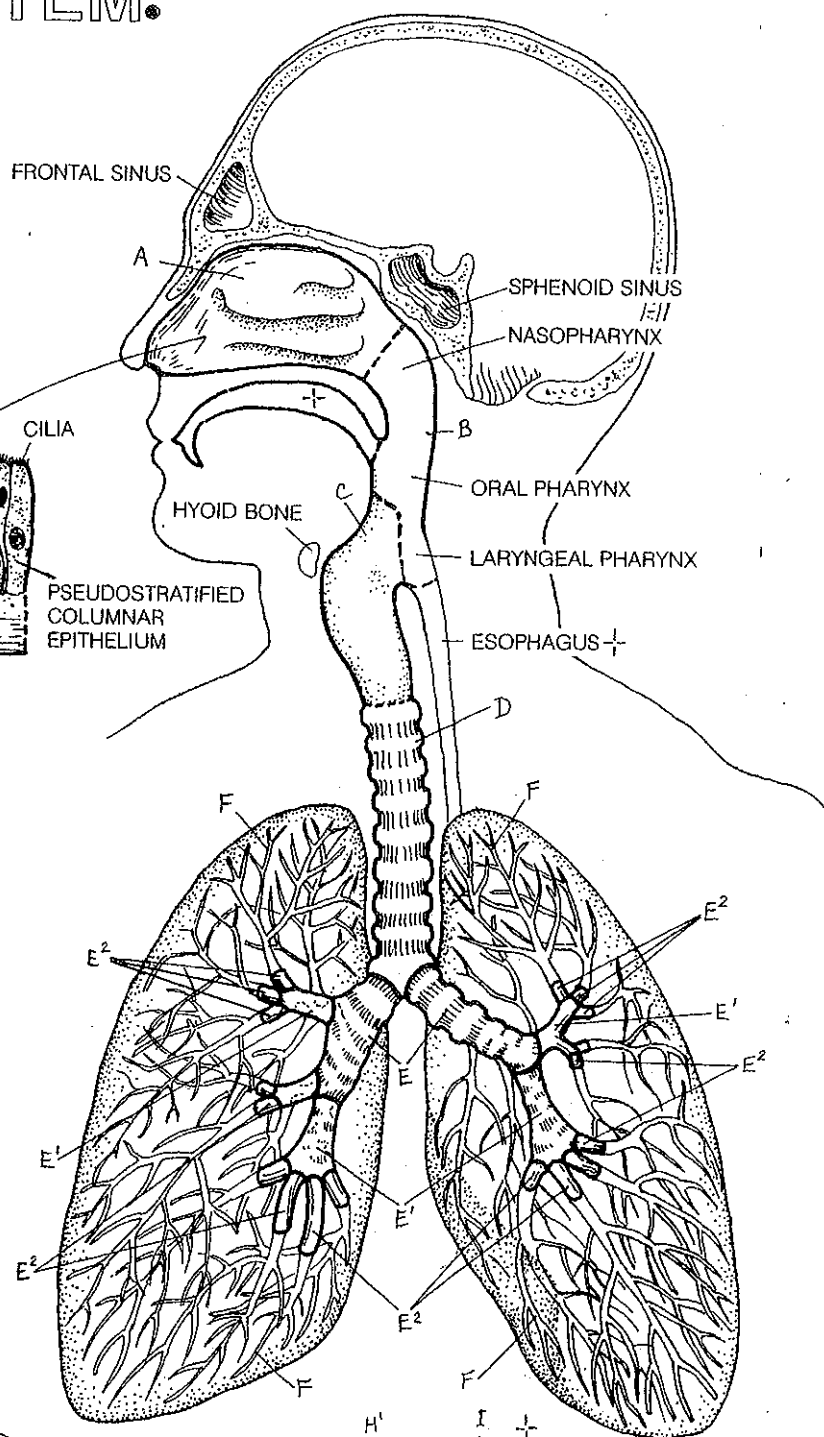
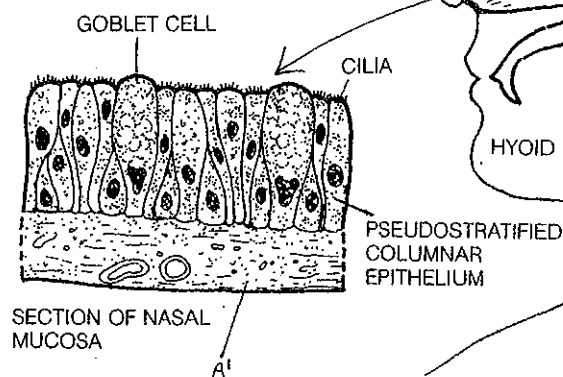
BRONCHUS★

PRIMARY_E

SECONDARY_{E¹}

TERTIARY_{E²}

BRONCHIOLE_F



GAS EXCHANGE PART★

RESPIRATORY BRONCHIOLE_{F¹}

ALVEOLAR DUCT_G

ALVEOLAR SAC_H

ALVEOLUS_{H¹}

CAPILLARY_I